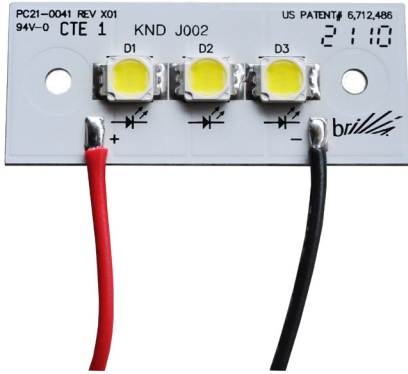


Features & Benefits

- Constant current design
- Protective transparent coating
- Patented intelligent thermal design uses metal core board (MCPCB)
- Includes mounting holes for mechanical attachment and pre-wired leads
- Easily configured into existing and new luminaires
- Available in a variety of color temperatures
- Can be used to meet the requirements of CA Title 24, ENERGY STAR® and other green initiatives



Required Brillia LED Drivers

AI1250 Series, AI1260 Series See Brillia LED driver specifications

Ratings and Performance Specifications

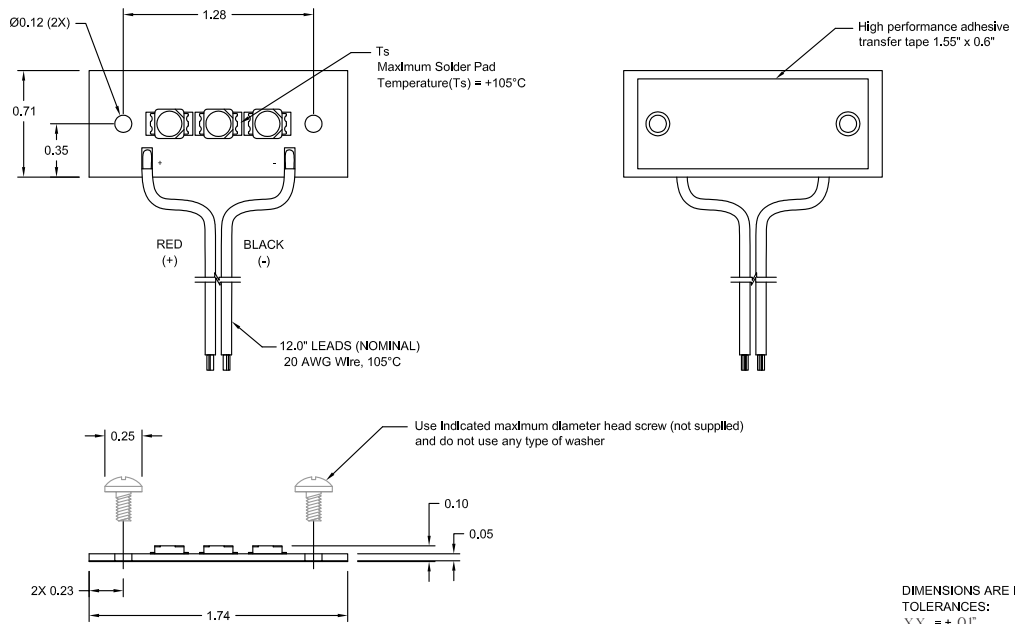
Nominal DC Power Consumption @ 350mA DC	4.2W
Maximum Input Requirements.....	350mA DC
Maximum Operating Range Ambient Temperature (Ta)	-40 to +50 °C
Maximum Solder Pad Temperature (Ts)	+105 °C
Maximum Screw Installation Torque.....	50 inch-ounces
Estimated Lumen Depreciation (LM80 standard)	70% of initial lumens (L ₇₀) at 40,000 hours
Maximum Weight	9 grams
Safety/Compliance	
UL Class 2 Recognized Component E321468	
RoHs compliant	

Application Notes

1. The use of any washer (lock, flat, etc.) will void the warranty due to possible damage and/or shorting to the circuit board.
2. The proper LED Solder Pad Temperature (Ts) is critical to ensure long life. Careful design consideration required for factors such as ambient conditions (for example weather and surrounding atmosphere inside exterior luminaires) and proximity to other heat sources such as other LED modules and heat generating LED drivers.
3. Abnormal operating conditions such as elevated operating temperatures can be expected to negatively impact lumen output, product lifetime, or product performance.



Physical Dimensions



DIMENSIONS ARE IN INCHES
TOLERANCES:
XX = ± 0.1"
X.XXX = ± 0.005"

Part Number	Nichia NS3x183 LED Package Bin	Nominal Values CCT Color Temp. (Kelvin)	Sample Values Light Output ^[2] (Lumens)	Sample Values Efficacy ^[2] (LPW)	Sample Values CRI ^[1]	Nominal Beam Angle (Degrees)
BB03BU-20031-120020-01	SW27	2700	210	38	80	120
BB03BU-27031-120020-01	SW30	3000	235	42	80	120
BB03BU-21031-120020-01	SW35	3500	250	45	80	120
BB03BU-22031-120020-01	SW40	4000	265	47	80	120
BB03BU-24031-120020-01	SW50	5000	280	50	80	120

^[1]Higher CRI available by special order

^[2]Sample value when used with compatible LED driver (A11260-DIM-1, Eff=75%) and sample heatsink

^[3]Amber LED colors for turtle areas available by special order

^[4]Actual Sample value tested to LM79 standard with Brillia LED 120VAC driver and heatsink

Options: sales@brillialed.com

Other LED colors or LED manufacturers please email sales@brillialed.com.

Packaging:

Modules are marked with abbreviated SKU and lot traceability information on non-LED side of module. Modules are sold in groups of 5 units and packaged in ESD box or bags as applicable with SKU and lot traceability information.

Warranty:

3 Year limited warranty in accordance with Brillia published warranty at www.BrilliaLED.com. Product must be used with compatible Brillia components (modules, drivers, engines and/or accessories) and no maximum ratings (such as Ts) shall be exceeded during any expected operating conditions of the system.

Permlight Products Inc. holds the following United States patents of which one or more may be applicable to the design and/or manufacture of this product. Additional granted patents, patents pending and other intellectual property protection rights may apply to this product.

United States Patents: 6712486, 6578986, 6846093, 7114831, 7306353, 7102172, 7108396, 7329024, 7387406, 7582911, 7582911, 7649327